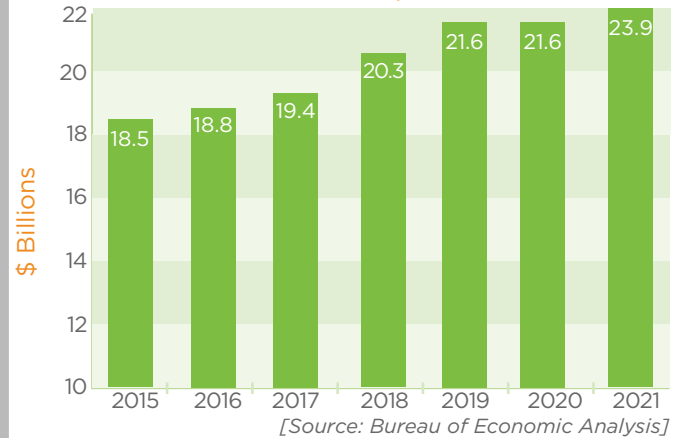


ECONOMIC OUTPUT

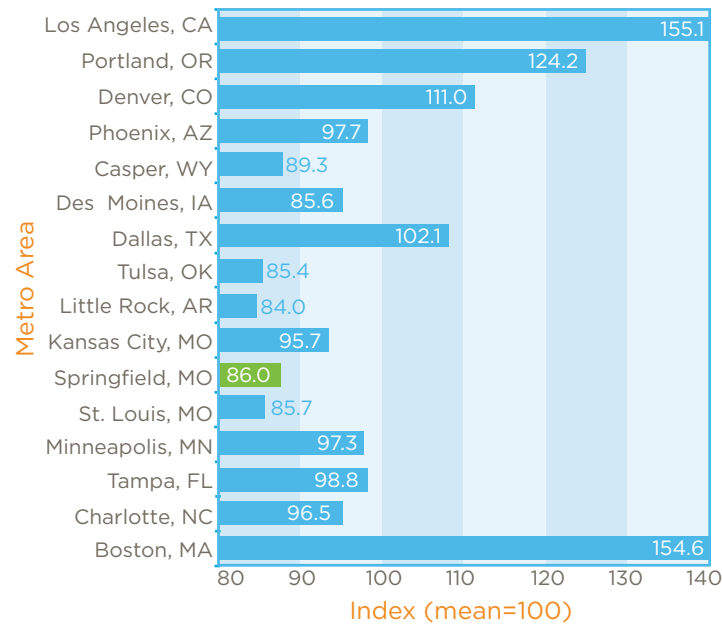
36% Springfield Gross Metro Product growth between 2010 and 2020.

GROSS METRO PRODUCT | SPRINGFIELD MSA

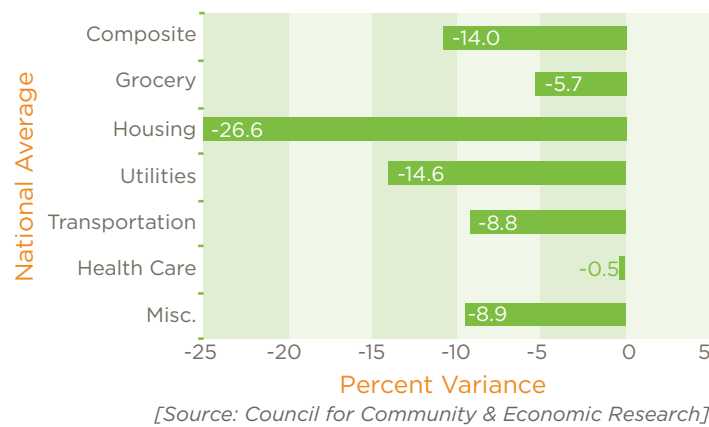


COST OF LIVING

COST OF LIVING INDEX COMPARISON



COST OF LIVING CATEGORIES

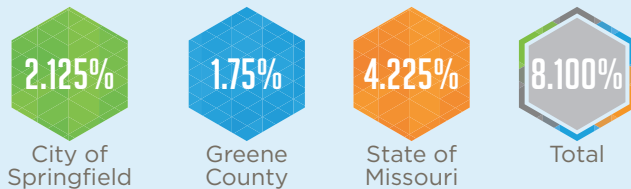


TAXES

INCOME TAX

- Missouri Income Tax: Graduated rate; highest is \$291 plus 5.3% over \$8,968. Part of the federal taxes paid are subtracted from the net income to determine the state taxable income.
- Missouri Corporate Income Tax: 4%; 50% of the federal taxes paid is subtracted from the net income to determine the net taxable income earned in Missouri.

SALES TAX



PROPERTY TAX

- Real Property Tax: \$5.4612 per \$100 of assessed value. (A \$1.04 surcharge is added to commercial property.) Property is assessed at the following percentages of their appraised value: commercial - 32%; residential - 19%; agricultural - 12%
- Personal Property Tax: \$5.4612 per \$100 of assessed value. Assessed valuation is one-third (33.3%).

Springfield R-12 School District	\$4.0767
City of Springfield	\$0.6200
Springfield-Greene County Library	\$0.2405
OTC	\$0.1911
Greene County	\$0.1040
Roads & Bridges	\$0.1040
Senior Services	\$0.0487
County Development Disability Programs	\$0.0462
State of Missouri	\$0.0300
Total	\$5.4612



INSIDE SPRINGFIELD

Demographic Profile

SPRINGFIELD
MISSOURI

REGIONAL • ECONOMIC • PARTNERSHIP

springfieldregion.com

EXECUTIVE SUMMARY

SPRINGFIELD MSA

Greene • Christian • Webster • Polk • Dallas counties in Southwest Missouri.

NATIONAL RECOGNITION FOR SPRINGFIELD

- Top 5 Best Cities to Start a Business | WalletHub
- Top 10 Recovery Leaders | Business Facilities
- Top 20 Magnets for Young Adults | USA Today
- Top 30 Best Cities for Job Growth | New Geography
- Top 40 For Business and Careers | Forbes Magazine
- Top 100 Places to Live | Livability.com

WELL-KNOWN COMPANIES

- 3M
- Bass Pro
- FORVIS
- Burlington Northern Santa Fe
- Dairy Farmers of America
- Expedia, Inc.
- Jack Henry & Associates
- JPMorgan Chase
- Kraft Foods
- O'Reilly Auto Parts
- Paul Mueller Company
- Springfield Remanufacturing Corp.
- T-Mobile

POPULATION

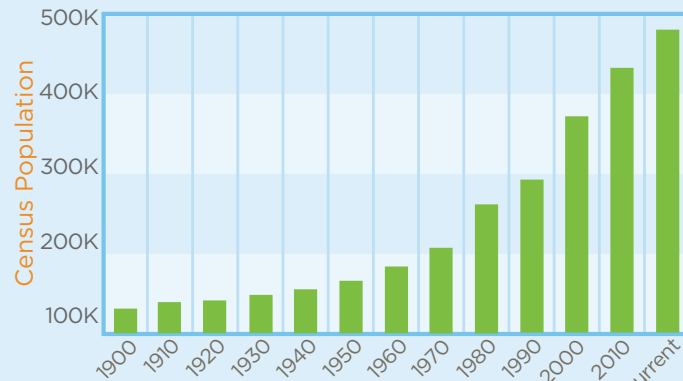
481,483

Current Springfield Metro Area Population

1.3%

Metro Area Overall Population Growth

POPULATION | SPRINGFIELD MSA



Source: USDC, Bureau of the Census

169,724

Springfield City Limits

1,060,299

*Springfield's Economic Area

649,960

**Springfield Regional Economic Partnership

* (Defined by the U.S. Dept. of Commerce, Bureau Of Economic Analysis includes: Missouri counties of Barry, Christian, Dade, Dallas, Dent, Douglas, Greene, Hickory, Howell, Laclede, Lawrence, Oregon, Ozark, Phelps, Polk, Pulaski, Shannon, Stone, Taney, Texas, Webster and Wright, and the Arkansas counties of Baxter, Boone, Carroll, Marion and Newton)

** (10-county area includes: Barry, Christian, Dade, Dallas, Lawrence, Greene, Polk, Stone, Taney and Webster counties)



ENGINE REMANUFACTURING AT JOHN DEERE REMAN

WORKFORCE

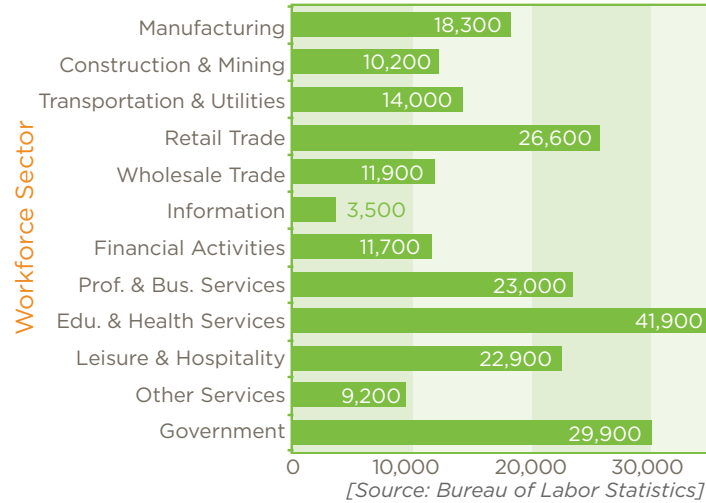
241,499

Current Springfield Metro Area Workforce

7.6%

Workforce Growth Rate Since 2010

AVERAGE EMPLOYMENT SECTOR

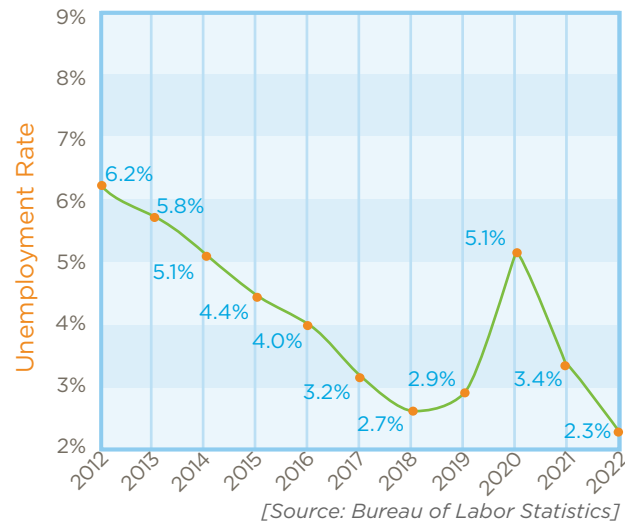


EMPLOYMENT

2.0%

Current Unemployment Rate for Springfield Metro

UNEMPLOYMENT RATE | SPRINGFIELD MSA



AIRPORT

Airline	Connection	Flights Daily
American	Dallas/Ft. Worth	6
American	Chicago	2
American	Charlotte	3
United	Chicago	3
United	Denver	3
United	Houston	2
Delta	Atlanta	3
Allegiant	Orlando	3 weekly
Allegiant	Tampa	3 weekly
Allegiant	Phoenix	3 weekly
Allegiant	Los Angeles	2 weekly
Allegiant	Las Vegas	2 weekly
Allegiant	Destin	2 weekly*
Allegiant	Punta Gorda	2 weekly*

*seasonal

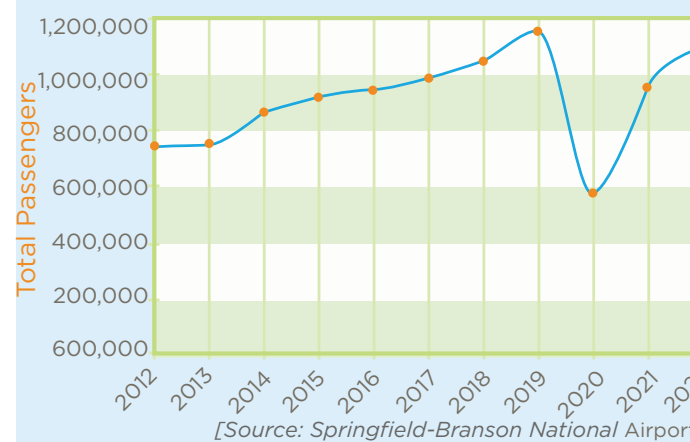
• Runways are 7,003 ft. and 8,000 ft. in length. The airport offers general aviation (24 hrs.) and cargo services which include FedEx and UPS as well as U.S. Customs office and a Foreign Trade Zone.

• Springfield offers direct flights to 5 of the 10 busiest airports in the country

• The Branson Airport (BKG) offers low-cost flights to connections all over the U.S. through Minneapolis-St. Paul International Airport.



TOTAL PASSENGERS FOR SGF



TRANSPORTATION



DISTANCES TO SPRINGFIELD

City	Miles	Days/Rail	City	Miles	Days/Rail
Kansas City	174	1	Denver	780	1
St. Louis	220	1	Atlanta	845	1
Memphis	285	1	New York	1,196	1
Dallas	430	2	Boston	1,407	2
Chicago	515	3	Los Angeles	1,651	3
Detroit	754	4	Seattle	2,032	4

UTILITIES & TELECOMMUNICATION

- Electric, water, and natural gas are provided through City Utilities of Springfield within the city limits and the general vicinity. www.cityutilities.net
- Sewer service is provided by the City of Springfield within the urban service area. www.springfieldmo.gov
- Electric service in the outlying areas is provided by Ozark Electric Cooperative, Southwest Electric Cooperative, Webster Electric Cooperative and White River Valley Electric Cooperative.
- AT&T is the primary provider of telecommunications infrastructure and services. Many other companies also provide similar services throughout the Springfield area.
- Fiber optic services are available within the city limits and in additional areas of increased development. High-speed internet, Sonet rings and redundant capabilities are also available in these areas.
- Numerous companies, including Verizon, Sprint and AT&T, have long distance points of presence (POP's) located in Springfield. Mostly POP's are situated within the downtown/center city area.
- Metro Ethernet fiber services are available to the business community from SpringNet, the broadband business division of City Utilities. It provides self-healing private networking and Internet access connectivity at speeds of up to 1 Gbps.