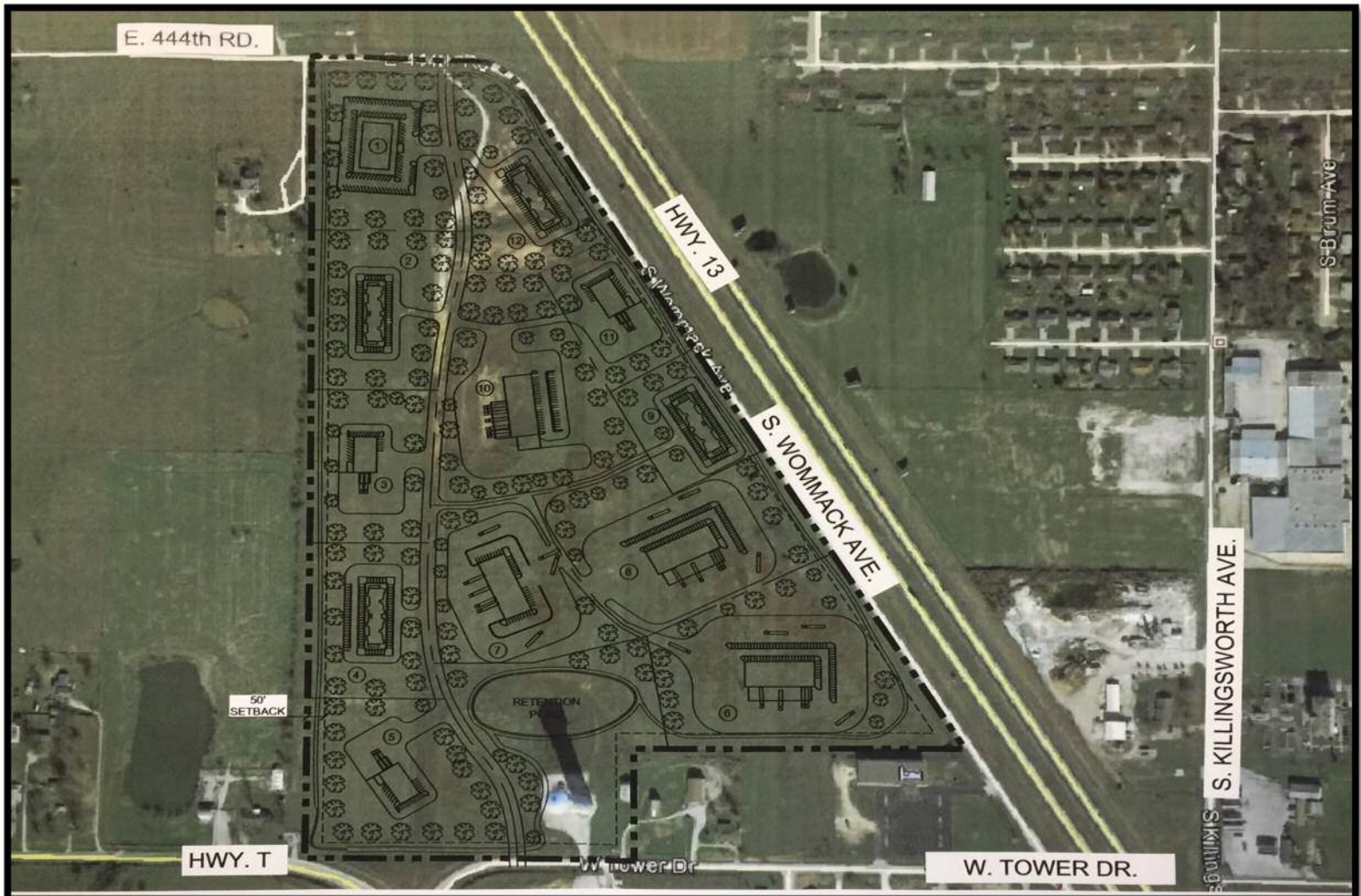
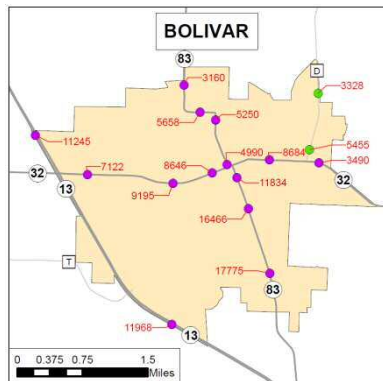


Bolivar Business Park

Bolivar, MISSOURI



- 72.7 Acres
- Located on Highway 13 outer road with prime access and visibility
- Daily traffic count – 18,000+
- Municipal water and sewer, Empire Electric, and fiber optics available immediately
- Reduction of cost per acre based on job creation and continued investment
- State and County incentives
- Located in a Foreign Trade Zone
- Municipal Fire District – ISO 3



Bolivar Industrial Development Authority
Contact: Gail Noggle
345 S Main Bolivar, Missouri 65613
417-328-5811
gnoggle@bolivar.mo.us