

INSIDE SPRINGFIELD



Demographic Profile

SPRINGFIELD
MISSOURI

REGIONAL • ECONOMIC • PARTNERSHIP

springfieldregion.com

EXECUTIVE SUMMARY

SPRINGFIELD MSA

Greene • Christian • Webster • Polk • Dallas counties in Southwest Missouri.

NATIONAL RECOGNITION FOR SPRINGFIELD

- Top 5 Best Cities to Start a Business | WalletHub
- Top 10 Recovery Leaders | Business Facilities
- Top 20 Magnets for Young Adults | USA Today
- Top 30 Best Cities for Job Growth | New Geography
- Top 40 For Business and Careers | Forbes Magazine
- Top 100 Places to Live | Livability.com

WELL-KNOWN COMPANIES

- 3M
- Bass Pro
- FORVIS
- Burlington Northern Santa Fe
- Dairy Farmers of America
- Expedia, Inc.
- Jack Henry & Associates
- JPMorgan Chase
- Kraft Foods
- O'Reilly Auto Parts
- Paul Mueller Company
- Springfield Remanufacturing Corp.
- T-Mobile

POPULATION

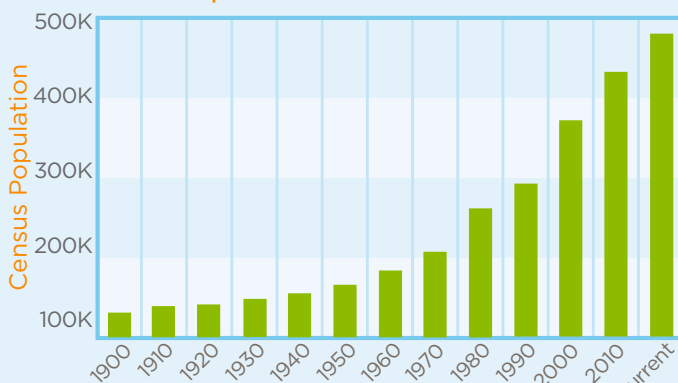
481,483

Current Springfield Metro Area Population

1.3%

Metro Area Overall Population Growth

POPULATION | SPRINGFIELD MSA



Source: USDC, Bureau of the Census]

169,724

Springfield City Limits

1,060,299

*Springfield's Economic Area

649,960

**Springfield Regional Economic Partnership

* (Defined by the U.S. Dept. of Commerce, Bureau Of Economic Analysis includes: Missouri counties of Barry, Christian, Dade, Dallas, Dent, Douglas, Greene, Hickory, Howell, Laclede, Lawrence, Oregon, Ozark, Phelps, Polk, Pulaski, Shannon, Stone, Taney, Texas, Webster and Wright, and the Arkansas counties of Baxter, Boone, Carroll, Marion and Newton)

** (10-county area includes: Barry, Christian, Dade, Dallas, Lawrence, Greene, Polk, Stone, Taney and Webster counties)



ENGINE REMANUFACTURING AT JOHN DEERE REMAN

WORKFORCE

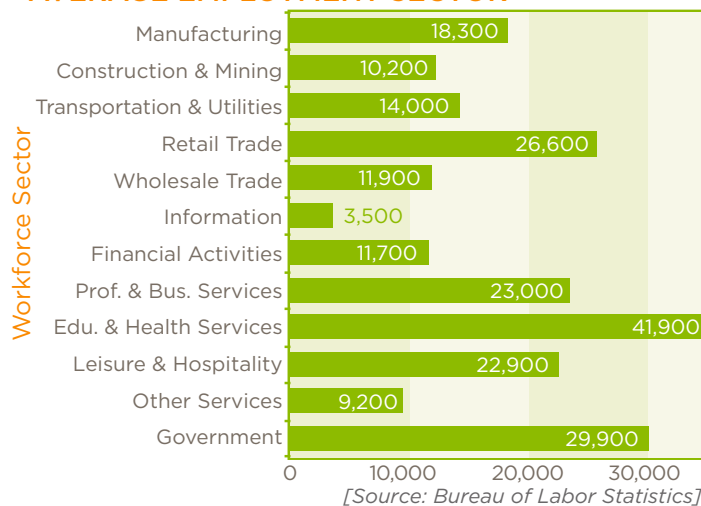
241,499

Current Springfield Metro Area Workforce

7.6%

Workforce Growth Rate Since 2010

AVERAGE EMPLOYMENT SECTOR

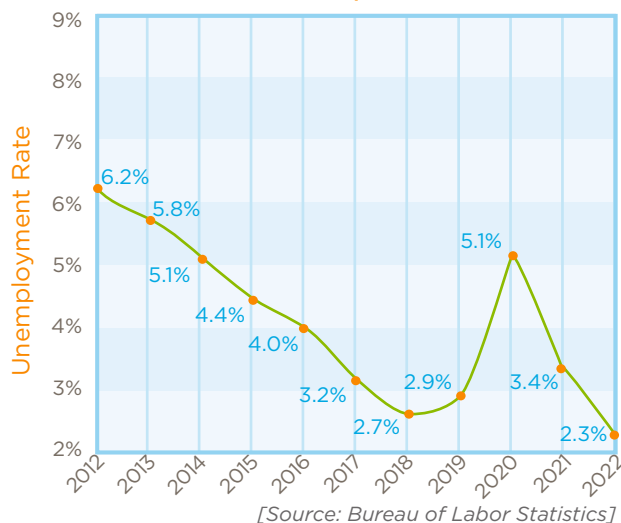


EMPLOYMENT

2.0%

Current Unemployment Rate for Springfield Metro

UNEMPLOYMENT RATE | SPRINGFIELD MSA



MAJOR EMPLOYERS

SPRINGFIELD METRO AREA EMPLOYMENT

LARGEST EMPLOYERS	# EMPLOYED
CoxHealth	12,178
Mercy Hospital Springfield	9,214
State of Missouri	5,411
Walmart and Sam's Club	4,981
Springfield Public Schools	3,685
Bass Pro Shops White River Marine Group (HQ)	2,989
O'Reilly Auto Parts (HQ)	2,631
United States Government	2,425
Jack Henry & Associates, Inc.	2,262
Citizens Memorial Healthcare	2,038
Burrell Behavioral Health	1,872
Missouri State University	1,861
City of Springfield	1,857
SRC Holdings (HQ)	1,750
EFCO (HQ)	1,600
Prime Inc. (HQ)	1,425
Amazon	1,400
RPS (Pyramid Foods)	1,300
Ozarks Technical Community College	1,125
Greene County	1,113
Chase Card Services	1,100
Expedia Inc.	1,100
Great Southern Bank (HQ)	1,100
American National Property & Casualty Co.	1,034
Kraft Heinz Company	997
Lowe's (6 locations)	969

1/4

Top 25 largest employers account for one-quarter of the total jobs in the Springfield metro area.

95%

Percentage of businesses that have fewer than 50 employees in the Springfield metro area.

HEALTH CARE

HOSPITAL	BEDS
Mercy Hospital	914
Cox Medical Center South (CoxHealth)	706
Lakeland Behavioral Health System	100
Meyer Orthopedic & Rehabilitation Hospital	86
Cox North Hospital (CoxHealth)	72
Mercy Rehabilitation Hospital Springfield	60
Mercy Orthopedic Hospital Springfield	48
Select Specialty Hospital	44
Perimeter Behavioral Hospital of Springfield	25

Springfield's health care system offers every specialty listed by the American Medical Association.

The health care sector employs nearly 37,400 people and provides an annual economic impact of \$4.5 billion.



MISSOURI STATE UNIVERSITY

COLLEGES & UNIVERSITIES

COLLEGES & UNIVERSITIES	NUMBERS
Springfield Metro Area Total	42,237
Missouri State University	22,925
Ozarks Technical Community College	10,506
Drury University	2,462
Evangel University	2,100
Southwest Baptist University - SBU	1,713
Cox College of Nursing & Health Sciences	956
SBU - Springfield Campus (includes Mercy College of Nursing)	442
Midwest Technical Institute	385*
Baptist Bible College	280
Bryan University	184*
Columbia College	150
Bolivar Technical College	134

Source: Springfield Area Chamber of Commerce, 2021
*National Center for Education Statistics, fall 2021 enrollment

SCHOOLS

12.1

Number of years of experience the average teacher has in SPS system

59.6%

Percentage of faculty that have a Master's Degree.

TYPE	SCHOOL	ENROLLED
Public Elementary	38	11,631
Public Middle School	9	5,137
Public High School	5	7,581
Private Schools	14	3,754*

Source: Missouri Department of Elementary and Secondary Education, 2022
*National Center for Education Statistics,

INCOME & WAGE RATES

IN THE SPRINGFIELD METRO AREA



Per Capita Income



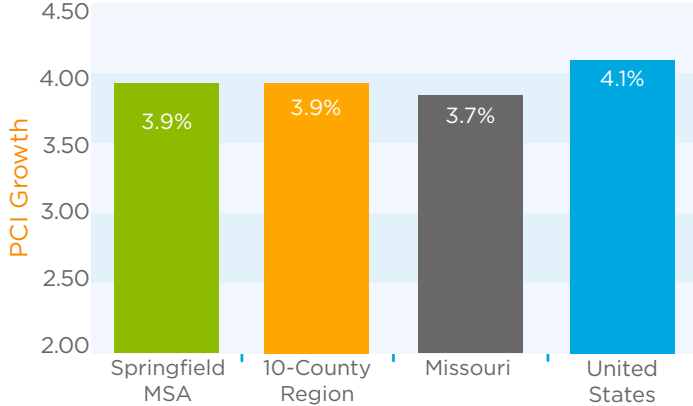
Average Wage Per Job



Average Household Income

[Source: USDC, Bureau Of Economic Analysis, Bureau of the Census, 2021]
[*USDC, Bureau of the Census, American Community Survey, 2021]

PER CAPITA INCOME GROWTH



[Source: Bureau Of Economic Analysis]

Office & Clerical

	National	Springfield
Executive Admin Assistant	\$32.15	\$24.85
General Office Clerk	\$18.75	\$16.83
Receptionist	\$15.82	\$13.23
Office Manager	\$30.47	\$26.59

Professional & Technical

	National	Springfield
Accountant / Auditor	\$40.37	\$32.29
Computer Programmer	\$46.46	\$36.23
Mechanical Engineer	\$46.64	\$38.31
Marketing Manager	\$73.77	\$48.97
Human Resources Manager	\$65.67	\$50.58

Manufacturing & Maintenance

	National	Springfield
Maintenance & Repair Worker	\$21.60	\$18.59
Janitor	\$15.32	\$13.68
First Line Supervisor (Prod. & Oper.)	\$32.37	\$27.92
Tool Setters, Operators & Tender	\$19.63	\$17.64
Sheet Metal Worker	\$28.25	\$26.28

Miscellaneous

	National	Springfield
Welder	\$23.11	\$21.19
Truck Driver (Light/Delivery)	\$20.50	\$19.44
Mail Clerk	\$16.54	\$13.97
Training & Development Specialist	\$32.51	\$25.19
Customer Service Representative	\$18.79	\$16.73

[Source: Bureau of Labor Statistics, 2021]

HOUSING

AVERAGE HOME SALES PRICE TRENDS

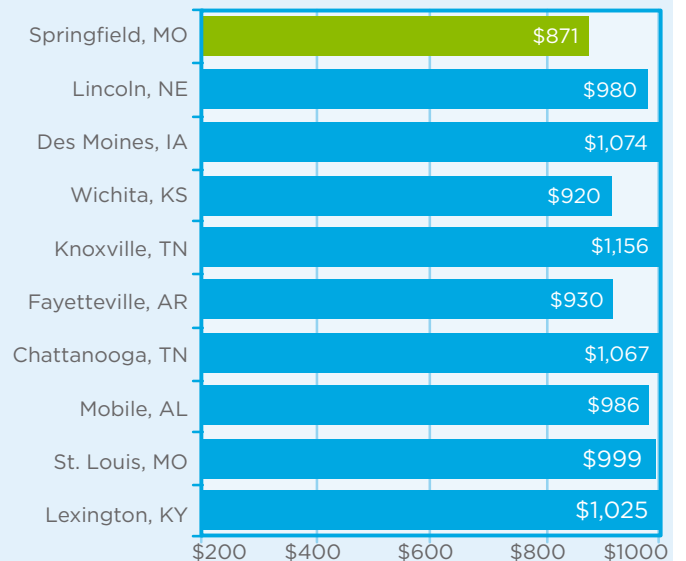


[Source: Greater Springfield Board of Realtors]



ROUNTREE, A HISTORIC CENTER-CITY NEIGHBORHOOD

FAIR MARKET RENTS COMPARISON



Fair Market Rents (2 bedroom)

[Source: 2022 Fair Market Rents]

AIRPORT

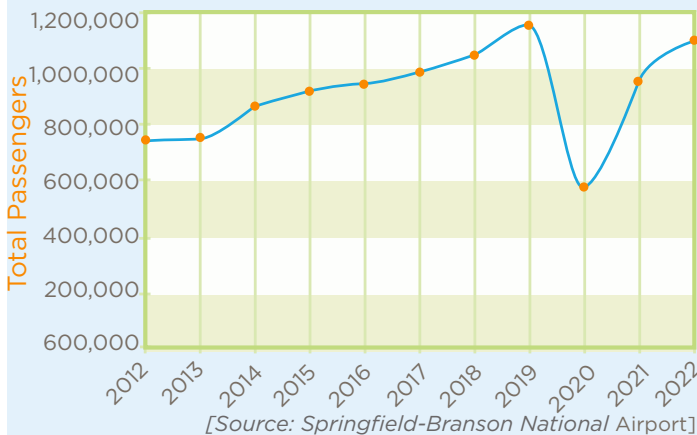
Airline	Connection	Flights Daily
American	Dallas/Ft. Worth	6
American	Chicago	2
American	Charlotte	3
United	Chicago	3
United	Denver	3
United	Houston	2
Delta	Atlanta	3
Allegiant	Orlando	3 weekly
Allegiant	Tampa	3 weekly
Allegiant	Phoenix	3 weekly
Allegiant	Los Angeles	2 weekly
Allegiant	Las Vegas	2 weekly
Allegiant	Destin	2 weekly*
Allegiant	Punta Gorda	2 weekly*

*seasonal

- Runways are 7,003 ft. and 8,000 ft. in length. The airport offers general aviation (24 hrs.) and cargo services which include FedEx and UPS as well as U.S. Customs office and a Foreign Trade Zone.
- Springfield offers direct flights to 5 of the 10 busiest airports in the country
- The Branson Airport (BKG) offers low-cost flights to connections all over the U.S. through Minneapolis-St. Paul International Airport.



TOTAL PASSENGERS FOR SGF



TRANSPORTATION



DISTANCES TO SPRINGFIELD

City	Miles	Days/Rail	City	Miles	Days/Rail
Kansas City	174	1	Denver	780	1
St. Louis	220	1	Atlanta	845	1
Memphis	285	1	New York	1,196	1
Dallas	430	2	Boston	1,407	2
Chicago	515	3	Los Angeles	1,651	3
Detroit	754	4	Seattle	2,032	4

UTILITIES & TELECOMMUNICATION

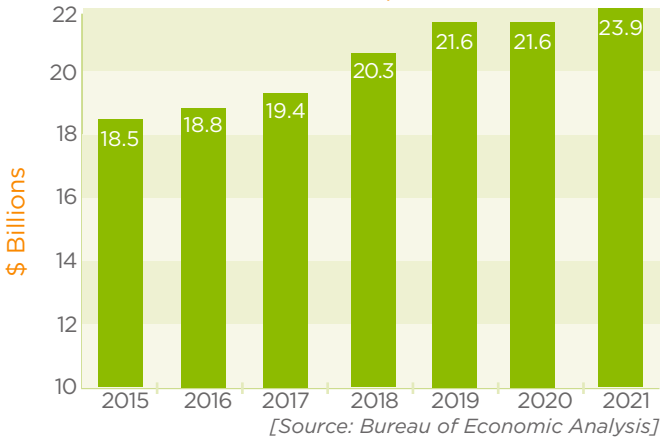
- Electric, water, and natural gas are provided through City Utilities of Springfield within the city limits and the general vicinity. www.cityutilities.net
- Sewer service is provided by the City of Springfield within the urban service area. www.springfieldmo.gov
- Electric service in the outlying areas is provided by Ozark Electric Cooperative, Southwest Electric Cooperative, Webster Electric Cooperative and White River Valley Electric Cooperative.
- AT&T is the primary provider of telecommunications infrastructure and services. Many other companies also provide similar services throughout the Springfield area.
- Fiber optic services are available within the city limits and in additional areas of increased development. High-speed internet, Sonet rings and redundant capabilities are also available in these areas.
- Numerous companies, including Verizon, Sprint and AT&T, have long distance points of presence (POP's) located in Springfield. Mostly POP's are situated within the downtown/center city area.
- Metro Ethernet fiber services are available to the business community from SpringNet, the broadband business division of City Utilities. It provides self-healing private networking and Internet access connectivity at speeds of up to 1 Gbps.

ECONOMIC OUTPUT

36%

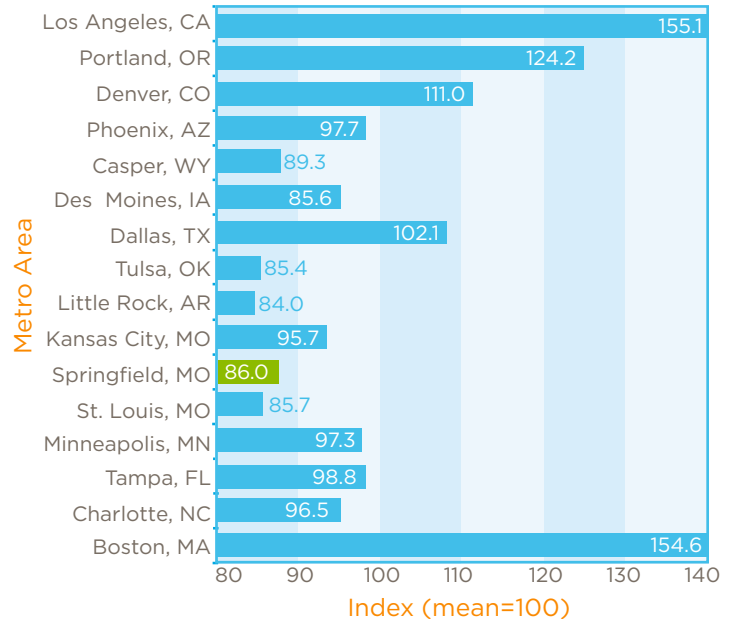
Springfield Gross Metro Product growth between 2010 and 2020.

GROSS METRO PRODUCT | SPRINGFIELD MSA

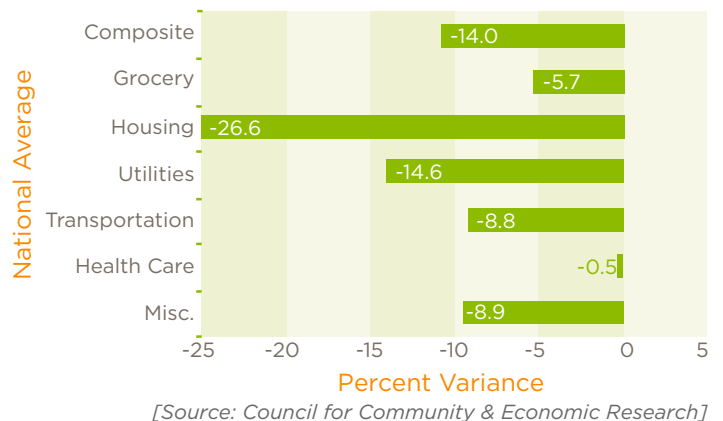


COST OF LIVING

COST OF LIVING INDEX COMPARISON



COST OF LIVING CATEGORIES

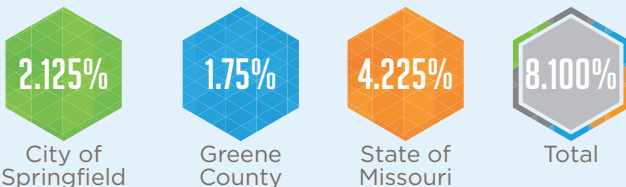


TAXES

INCOME TAX

- Missouri Income Tax: Graduated rate; highest is \$291 plus 5.3% over \$8,968. Part of the federal taxes paid are subtracted from the net income to determine the state taxable income.
- Missouri Corporate Income Tax: 4%; 50% of the federal taxes paid is subtracted from the net income to determine the net taxable income earned in Missouri.

SALES TAX



PROPERTY TAX

- Real Property Tax: \$5.4612 per \$100 of assessed value. (A \$1.04 surcharge is added to commercial property.) Property is assessed at the following percentages of their appraised value: commercial - 32%; residential - 19%; agricultural - 12%
- Personal Property Tax: \$5.4612 per \$100 of assessed value. Assessed valuation is one-third (33.3%).

Springfield R-12 School District	\$4.0767
City of Springfield	\$0.6200
Springfield-Greene County Library	\$0.2405
OTC	\$0.1911
Greene County	\$0.1040
Roads & Bridges	\$0.1040
Senior Services	\$0.0487
County Development Disability Programs	\$0.0462
State of Missouri	\$0.0300
Total	\$5.4612