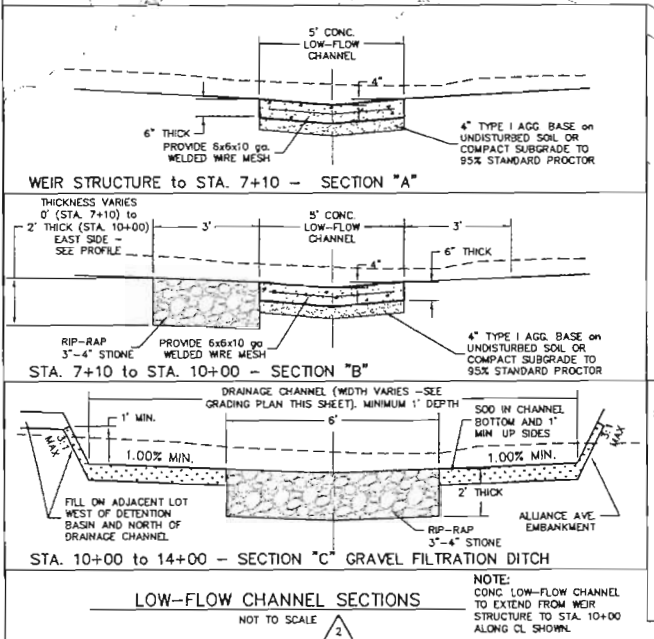
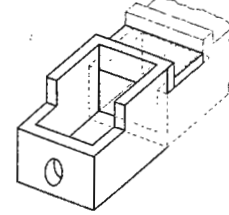
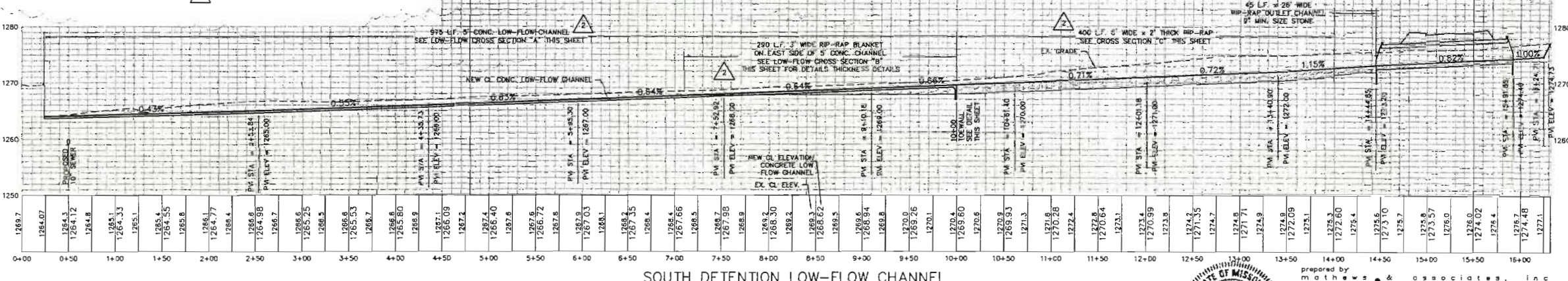
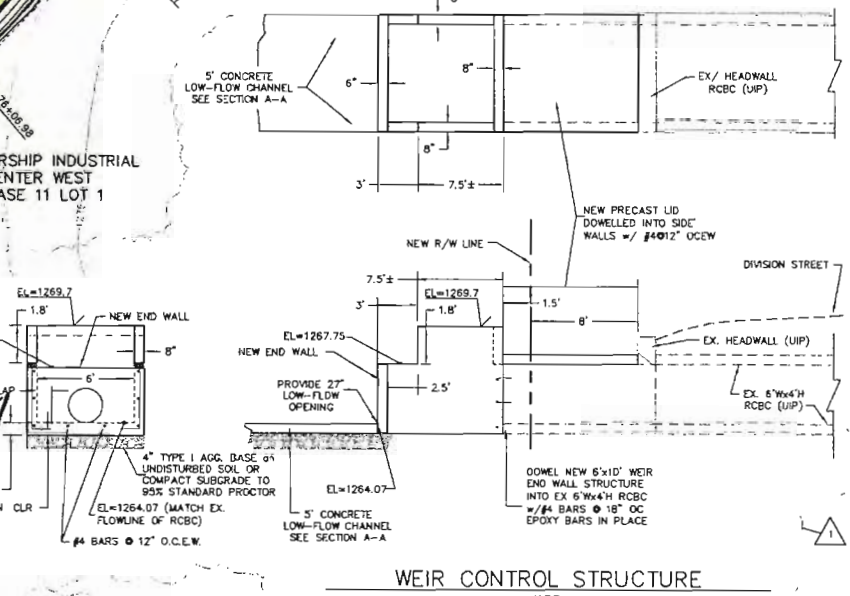


- Sanitary Sewer (constructed)
- Detention (constructed)
- Street (constructed)
- Future (not currently constructed)



NOTE: SEE SHEETS 6A & 6B FOR DETENTION BASIN AND ADJACENT PROPERTY CROSS SECTIONS.



SOUTH DETENTION LOW-FLOW CHANNEL

- 1 REVISED OUTLET STRUCTURE ON SOUTH SIDE OF EX. RCBC ON DIVISION
- 2 ADDED ADD'L RIP-RAP @ OUTLET OF RCBC. DELTED CONC. CHANNEL AND REPLACED WITH GRAVEL FILTRATION DITCH (10+00 TO 14+00); WIDENED CHANNEL GRADING.

FILED  
IN THE OFFICE OF THE  
DIRECTOR OF PUBLIC WORKS  
5-23-08  
Date  
*Kelley*

DEPARTMENT OF PUBLIC WORKS  
SPRINGFIELD, MISSOURI

PAVING & DRAINAGE IMPROVEMENTS  
DETENTION / WATER QUALITY BASIN

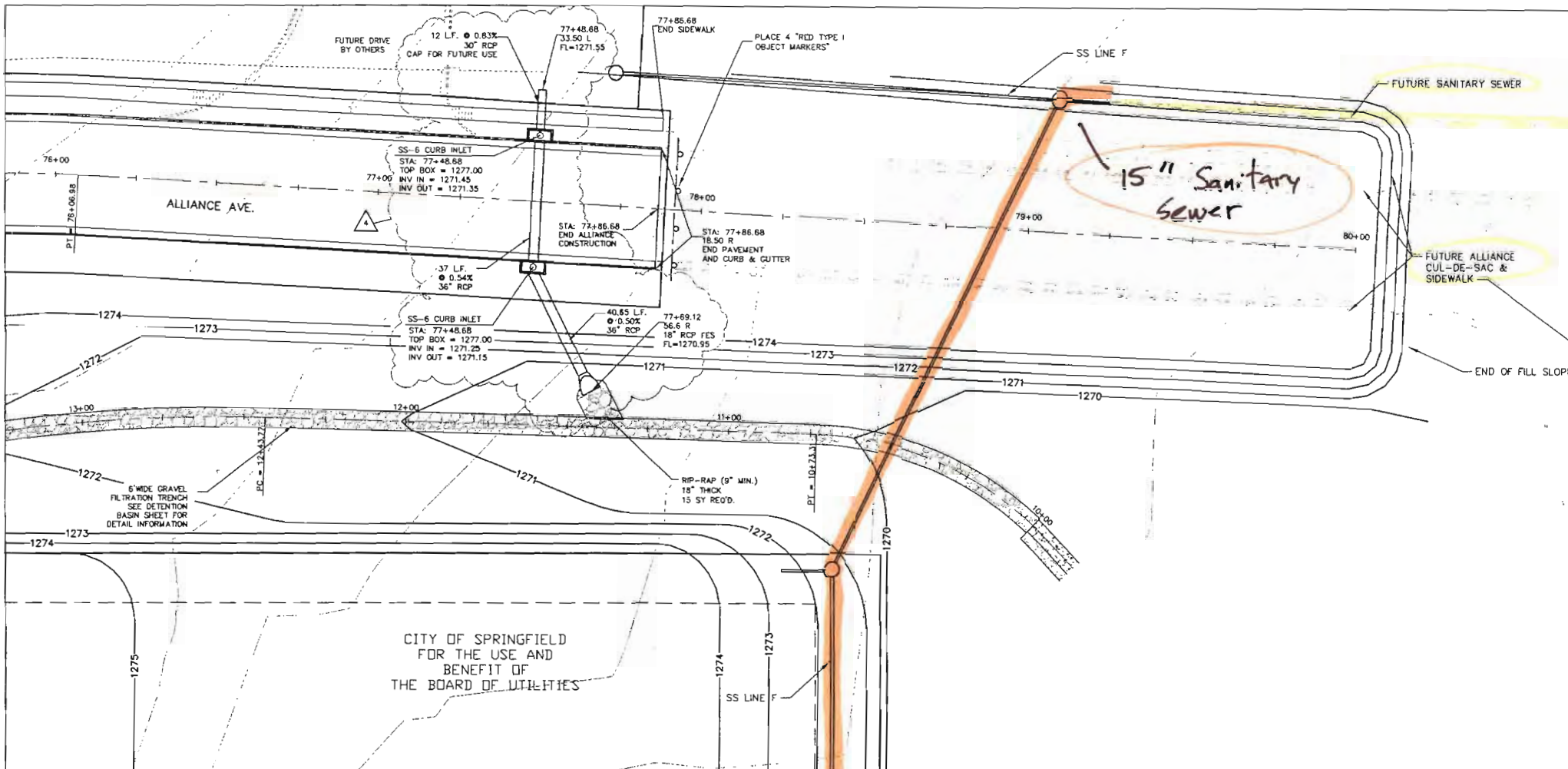
APPROVED *[Signature]* DATE 5-23-08  
DIRECTOR OF PUBLIC WORKS

SURVEY BY	MAI	SCALES	SHEET	6
FIELD BK	DRAWN MAI	HOW	1"=10'	OF 12 SHEETS
LEVEL BK	CHECKED MAI	VERT.	1"=10'	FILE NO. 892064

prepared by  
**mai** consulting engineers & land surveyors  
1831 w. elfindale, springfield, missouri 65807  
tel 417.869.6009 - fax 417.869.8129  
cvg. no 0027001 data prepared 5/22/08

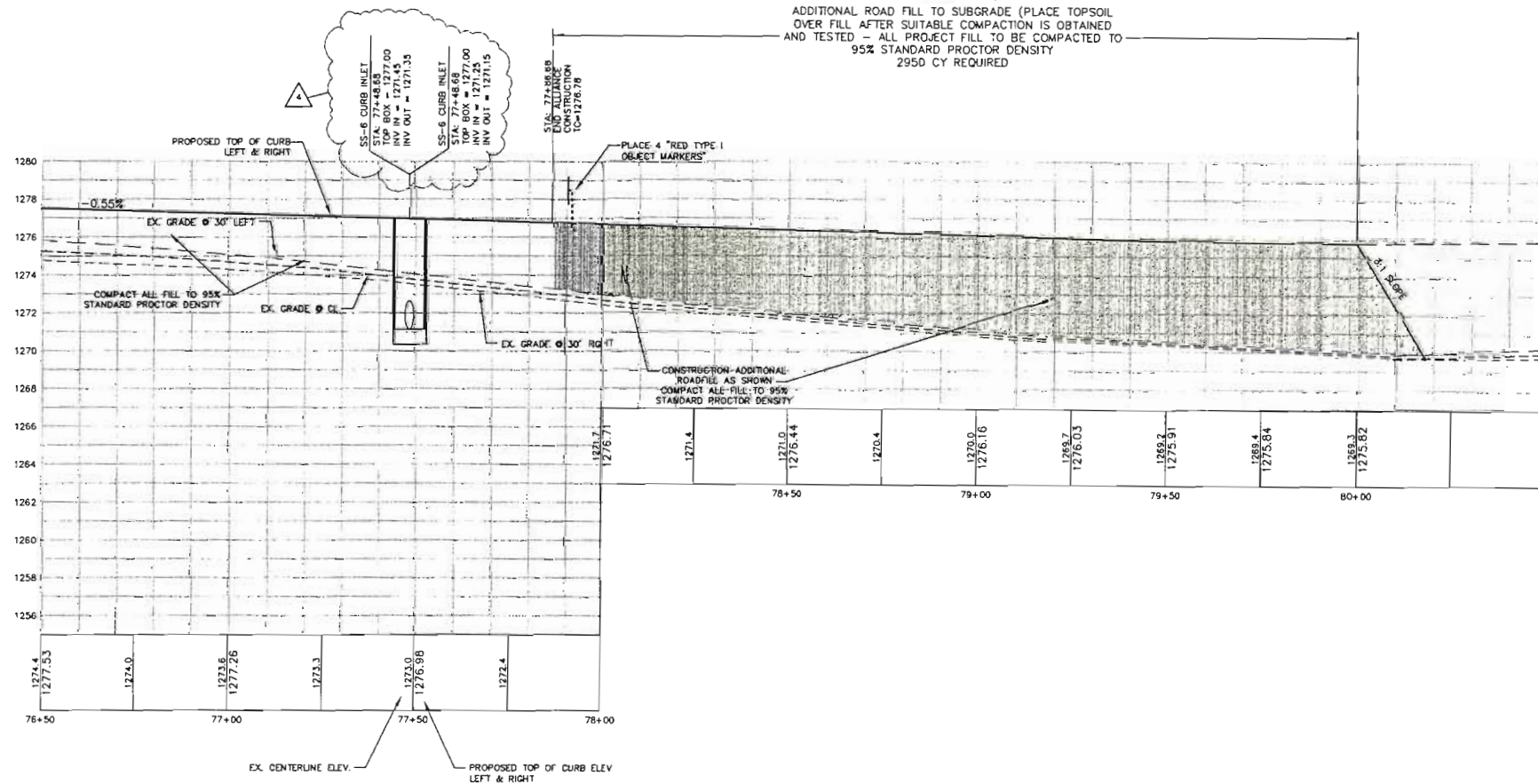


CITY OF SPRINGFIELD  
FOR THE USE AND  
BENEFIT OF  
THE BOARD OF UTILITIES



CITY OF SPRINGFIELD  
FOR THE USE AND  
BENEFIT OF  
THE BOARD OF UTILITIES

ADDITIONAL ROAD FILL TO SUBGRADE (PLACE TOPSOIL  
OVER FILL AFTER SUITABLE COMPACTION IS OBTAINED  
AND TESTED - ALL PROJECT FILL TO BE COMPACTED TO  
95% STANDARD PROCTOR DENSITY  
2950 CY REQUIRED



**FILED**  
IN THE OFFICE OF THE  
DIRECTOR OF PUBLIC WORKS  
5-23-08  
Date  
*Kelly [Signature]*

- 2 DELETED CONC. CHANNEL AND REPLACED WITH GRAVEL FILTRATION TRENCH (10+00 TO 14+00). WIDENED CHANNEL GRADING.
- 3 REVISED INLET LOCATION AND PIPE SIZES



prepared by:  
mathews & associates, inc  
**mai** consulting engineers  
land surveyors  
1861 W. Alford Ave. Springfield, Missouri 65807  
tel 417.869.6009 - fax 417.869.8129  
dwg. no. 0025T20 date prepared: 5/22/08

DEPARTMENT OF PUBLIC WORKS  
SPRINGFIELD, MISSOURI

PAVING & DRAINAGE IMPROVEMENTS  
ALLIANCE AVENUE EXTENSION

APPROVED *[Signature]* DATE 5-23-08  
DIRECTOR OF PUBLIC WORKS

SURVEY BY	DFSKIN MAI	SCALES	SHEET 5
DRAWN	MAI	HOR. 1"=20'	OF 12 SHEETS
FIELD BK	CHECKED MAI	VERT. 1"=2'	FILE 8PW804
LEVEL BK			

PAVING & DRAINAGE IMPROVEMENTS

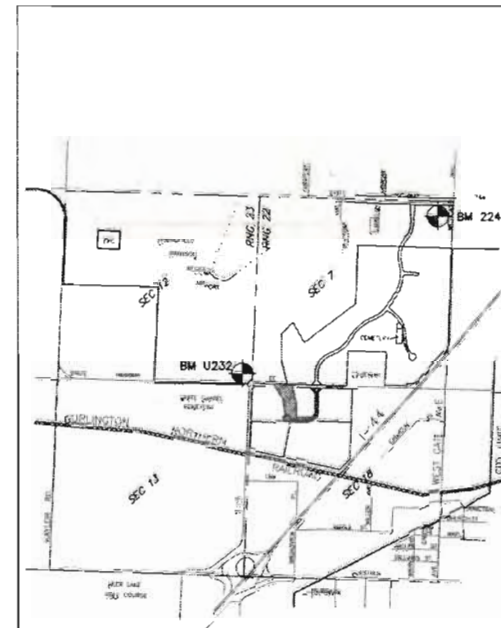
# PARTNERSHIP INDUSTRIAL CENTER WEST, PHASE 5

A PART OF SECTION 7, TOWNSHIP 29 NORTH, RANGE 22 WEST, AND A PART OF SECTION 12, TOWNSHIP 29 NORTH, RANGE 23 WEST, IN THE CITY OF SPRINGFIELD, GREENE COUNTY, MISSOURI



OWNER/SUBDIVIDER

SPRINGFIELD BUSINESS & DEVELOPMENT CORPORATION  
202 SOUTH JOHN Q. HAMMONS PARKWAY  
P.O. BOX 1687  
SPRINGFIELD, MISSOURI 65801-1687



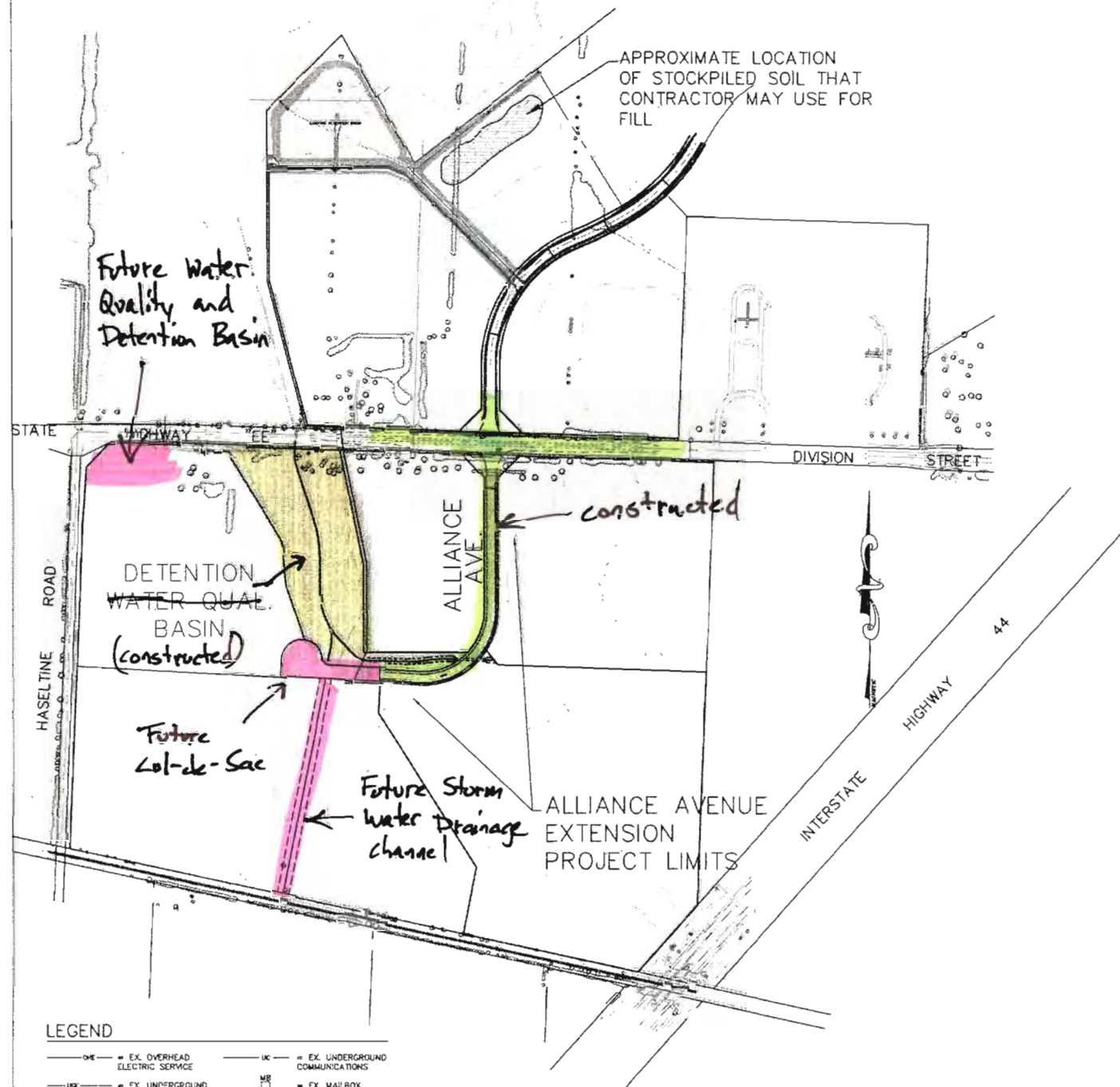
LOCATION MAP  
SCALE - 1"=2400'

## SHEET INDEX

- 1) COVER SHEET
- 2) PAVEMENT DETAILS
- 3-5) ALLIANCE AVENUE EXTENSION
- 6, 6A & 6B) DETENTION BASIN GRADING & CROSS SECTIONS
- 7, 7A & 7B) RCBC DETAILS
- 8-10) ALLIANCE AVE. CROSS SECTIONS
- 11-12) EROSION CONTROL LAYOUT AND DETAILS

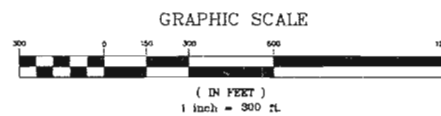
## GENERAL NOTES

1. IT IS THE CONTRACTOR'S RESPONSIBILITY TO DETERMINE THE EXACT HORIZONTAL AND VERTICAL LOCATION OF EXISTING UNDERGROUND FACILITIES PRIOR TO BEGINNING INSTALLATION OF NEW FACILITIES. CONTACT THE ENGINEER FOR INSTRUCTIONS WHEREVER ANY CONFLICTS ARE DISCOVERED.
2. IT IS THE CONTRACTOR'S RESPONSIBILITY TO CORRECT ANY DAMAGE TO UNDERGROUND UTILITIES OR OTHER OBSTRUCTIONS WHICH IS DUE TO HIS OPERATIONS.
3. ALL IMPROVEMENTS SHALL BE CONSTRUCTED IN ACCORDANCE WITH THE LATEST EDITION OF THE "DESIGN STANDARDS FOR PUBLIC IMPROVEMENTS, SPRINGFIELD, MISSOURI" AND THE "STANDARD GENERAL CONDITIONS AND TECHNICAL SPECIFICATIONS FOR PUBLIC WORKS CONSTRUCTION" ISSUED BY THE CITY OF SPRINGFIELD, MISSOURI, WHICHEVER IS APPLICABLE.
4. CONTRACTOR SHALL LOCATE ALL UNDERGROUND UTILITIES BEFORE EXCAVATION. UTILIZE "MISSOURI ONE-CALL" BY CALLING 1-800-DIG-RITE.
5. ALL CONSTRUCTION SIGNS AND BARRICADES MUST BE UTILIZED AND MAINTAINED IN COMPLIANCE WITH PART VI OF THE 2000 EDITION OF THE "MANUAL ON UNIFORM TRAFFIC CONTROL DEVICES" AND ANY REVISIONS THERETO.



### LEGEND

—○—	EX OVERHEAD ELECTRIC SERVICE	—○—	EX UNDERGROUND COMMUNICATIONS
—□—	EX UNDERGROUND ELECTRIC SERVICE	—○—	EX MAILBOX
—●—	EX POWER POLE	—○—	EX TREE
—▲—	EX GUY ANCHOR	—○—	EX SHRUB
—□—	EX ELECTRICAL JUNCTION BOX	—○—	EX LANDSCAPED AREA
—○—	EX WATER MAIN	—○—	EX IRON PIN (PROPERTY CORNER)
—○—	EX WATER VALVE	—○—	EX CONTOUR (1 FT. INTERVAL)
—○—	EX WATER METER	—○—	EX SPINKLER HEAD
—○—	EX WATER-GAS (JOINT TRENCH)	—○—	EX LIGHT POLE
—○—	EX GAS MAIN	—○—	EX FENCE (CHAIN-LINK)
—○—	EX GAS VALVE	—○—	EX FENCE (BARBED WIRE)
—○—	PROP. MANHOLE & SANITARY SEWER PIPE	—○—	EX FENCE (WOOD PRIVACY OR SPLIT RAIL)
—○—	EXISTING MANHOLE & SANITARY SEWER LINE	—○—	REPLACEMENT FENCE
—○—	ADA HANDICAP RAMP		



**BENCHMARKS**  
CITY B.M. 224 - WESTGATE @ KEARNEY  
S.W. QUADRANT OF INTERSECTION; LIGHT POLE (AZ. 312 - 101')  
POWER POLE (AZ. 146 - 93.6') POWER POLE (AZ. 177 - 102.2')  
ELEV. = 1281.71  
CITY B.M. U232 - FR 115 @ RTE. EE  
ELEV. = 1273.00



**FILED**  
IN THE OFFICE OF THE  
DIRECTOR OF PUBLIC WORKS  
5-22-2008

prepared by  
**mai** consulting engineers  
and surveyors  
1661 w. ellisdale, springfield, missouri 65807  
tel: 417.869.6009 - fax: 417.869.8129  
dwg. no. 0027CVST-130ACRES date prepared: 5/22/08

1	REVISED OUTLET STRUCTURE ON SOUTH SIDE OF EX RCBC ON DIVISION
2	ADDED ADD'L RIP-RAP @ OUTLET OF RCBC DELETED CONC. CHANNEL AND REPLACED WITH GRAVEL FILTRATION DITCH (10'-00" TO 14'-00") WORKED CHANNEL GRADING
3	REMOVED 24" RIP FROM SOUTH SIDE OF RCBC
4	REVISED INLET LOCATION AND PIPE SIZES

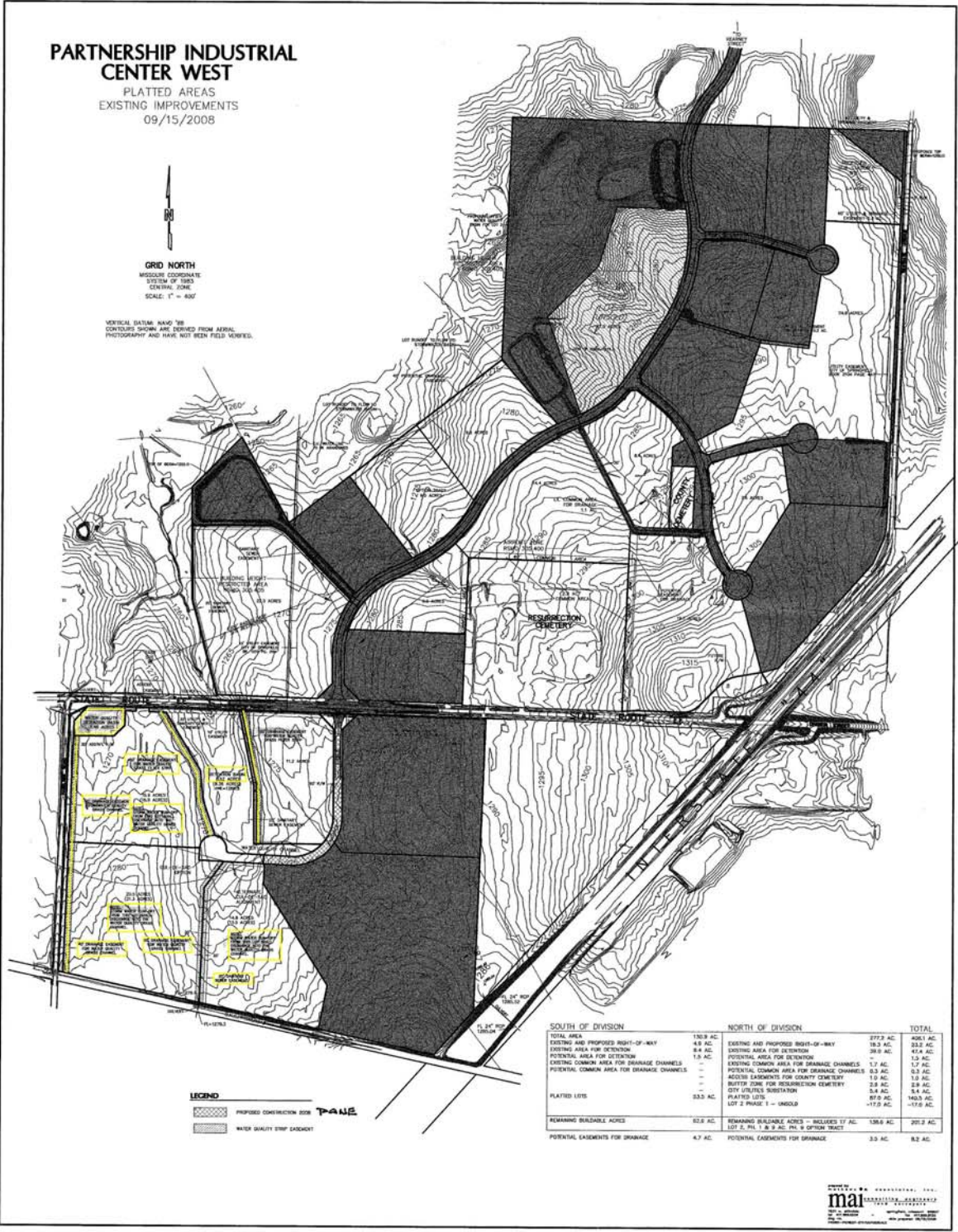
DEPARTMENT OF PUBLIC WORKS SPRINGFIELD, MISSOURI			
PIC WEST, PHASE 5 - SOUTH 130 ACRES PAVING & DRAINAGE IMPROVEMENTS			
APPROVED	<i>[Signature]</i>	DATE	5-22-08
DIRECTOR OF PUBLIC WORKS			
SURVEY BY	DESIGNED BY	BOARDS	SHEET
FIELD ENR	DRAWN BY	LINE 1:300	OF 12 SHEETS
LEVEL BR	CHECKED BY	YEAR 11/06	FILE NO. 0027CVST-130ACRES



**PARTNERSHIP INDUSTRIAL CENTER WEST**  
 PLATTED AREAS  
 EXISTING IMPROVEMENTS  
 09/15/2008

**GRID NORTH**  
 MISSOURI COORDINATE  
 SYSTEM OF 1983  
 CENTRAL ZONE  
 SCALE: 1" = 400'

VERTICAL DATUM: BOUND THE  
 CONTOURS SHOWN ARE DERIVED FROM AERIAL  
 PHOTOGRAPHY AND HAVE NOT BEEN FIELD VERIFIED.



**LEGEND**  
 [Symbol] PROPOSED CONSTRUCTION ROW  
 [Symbol] WATER QUALITY STRIP EASEMENT

SOUTH OF DIVISION		NORTH OF DIVISION		TOTAL
TOTAL AREA	102.9 AC	277.9 AC		402.8 AC
EXISTING AND PROPOSED RIGHT-OF-WAY	4.9 AC	18.3 AC		28.2 AC
EXISTING AREA FOR RETENTION	8.4 AC	28.8 AC		43.4 AC
POTENTIAL AREA FOR DETENTION	1.8 AC			1.8 AC
EXISTING COMMON AREA FOR DRAINAGE CHANNELS		1.7 AC		1.7 AC
POTENTIAL COMMON AREA FOR DRAINAGE CHANNELS		0.3 AC		0.3 AC
ACROSS EASEMENTS FOR COUNTY CEMETERY		1.9 AC		1.9 AC
BUTTING ZONE FOR RESURRICTION CEMETERY		2.8 AC		2.8 AC
CITY UTILITIES SUBSTATION	8.4 AC			8.4 AC
PLATTED LOTS	87.9 AC	17.0 AC		164.9 AC
LOT 2 PHASE 1 - UNBUILT				17.0 AC
REMAINING BUILDABLE ACRES	82.8 AC	158.6 AC		291.2 AC
POTENTIAL EASEMENTS FOR DRAINAGE	4.7 AC	3.0 AC		8.2 AC

**ma**  
 MISSOURI ARCHITECTURAL ASSOCIATION  
 1001 N. GARDNER STREET  
 ST. LOUIS, MO 63102  
 (314) 433-1234  
 www.ma-architects.com