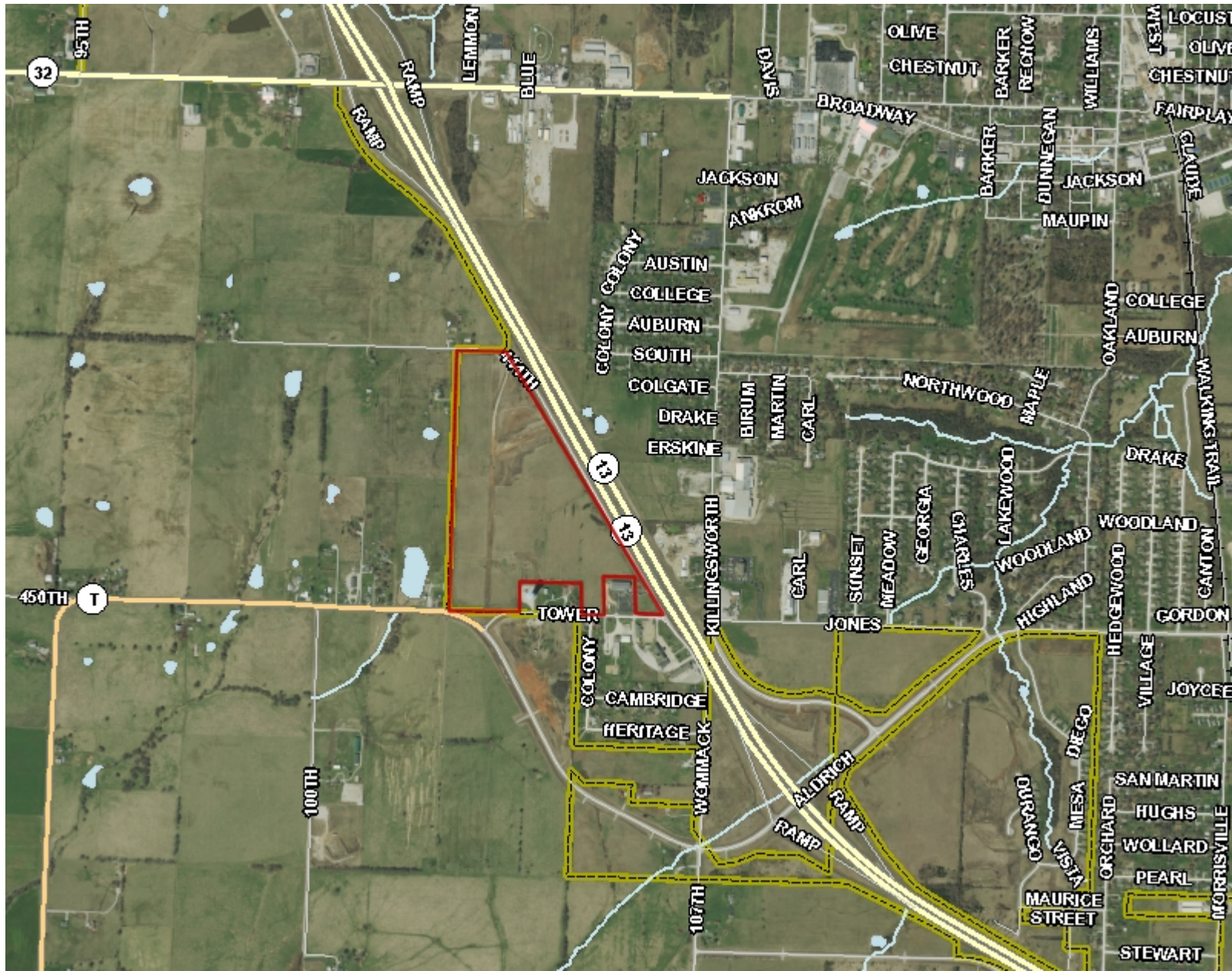


2.1.3 Aerial Photo



Legend

Roads

- All Roads
- State Lettered Hwy
- State Numbered Hwy
- Railroads

2,987.2 0 1,493.58 2,987.2 Feet



This map is a user generated static output from an Internet mapping site and is for reference only. Data layers that appear on this map may or may not be accurate, current, or otherwise reliable.

THIS MAP IS NOT TO BE USED FOR NAVIGATION

Notes

City of Bolivar - Bolivar Business Park
2015 Aerial Photography